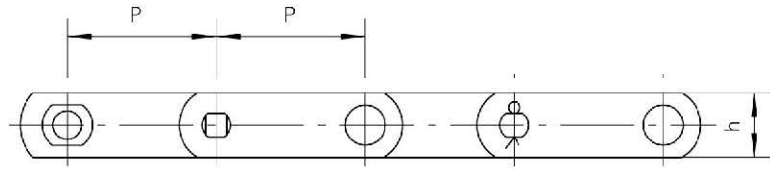
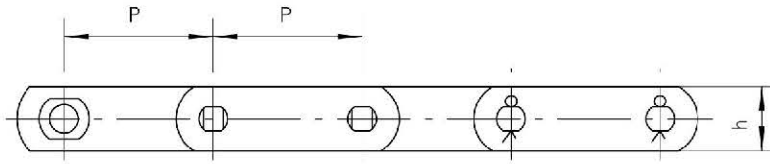
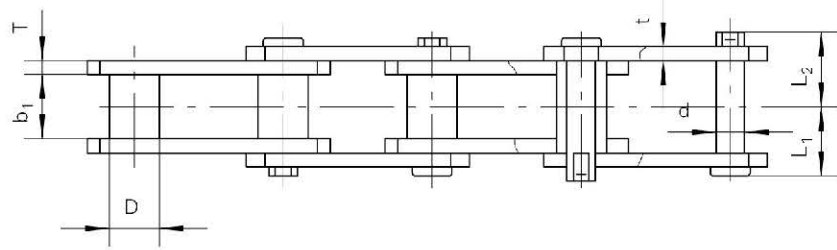


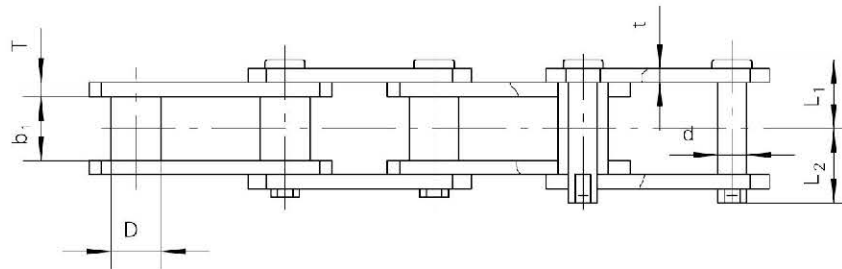
斗式提升机链 Bucket Elevator Chain



A型
A Type



B型
B Type

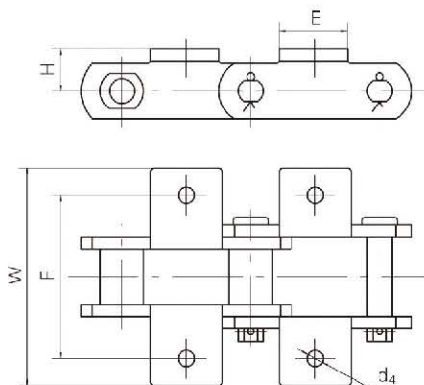


链号	节距	内节内宽	套筒外径	销轴				链板		最小抗拉强度	每米重量
Chain No.	Pitch	Width between inner sidebars	Bush Diameter	Pin				Sidebar		Ultimate Tensile Strength	Weight per Meter
	P	b ₁ (min)	D(max)	d	L ₁	L ₂	类型	h	t/T	Fu(min)	q
	mm	mm	mm	mm	mm	mm	Type	mm	mm	kN	kg/m
SS188	66.27	26.8	22.23	12.7	30.6	34.2	A	28.6	6.4	111.1	5.7
6188MS	66.27	26.8	22.23	12.7	31.9	35.4	B	28.6	6.4	115	6.38
SS131	78.1	32.4	31.75	15.88	41.8	44.9	A	38.1	9.5	177.8	11.62
HSB	80	35	23	16	38.9	44.6	B	40	8	240	9.34
SS102B	101.6	53.7	25.4	15.88	52.5	58.1	A	38.1	9.5	177.9	10.37
C6102S	101.6	56.36	25.4	15.88	52.8	61.2	A	38.1	9.5	231	11.17
S111	120.9	63.2	36.6	19.05	57.9	63.6	B	52.3	9.7	214	16.4
SS110	152.4	53.85	31.75	15.88	52.5	58	A	38.1	9.5	177.8	9.54

筑路行业用链 Road Construction Industrial Chain

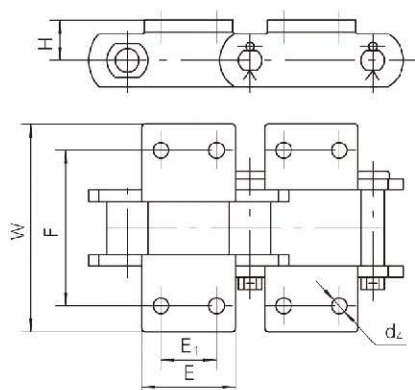
斗式提升机链 Bucket Elevator Chain

K1 附件
K1 Attachment



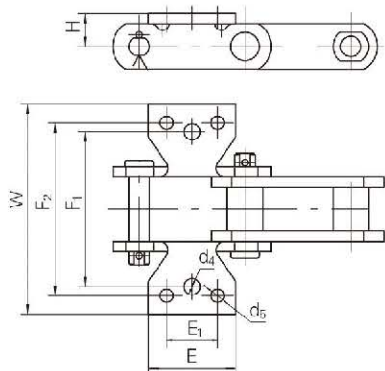
附件号	链号	F	W	E	H	d ₄
Att. No.	Chain No.	mm	mm	mm	mm	mm
K1	SS131	104.6	157.0	73.9	31.2	13.0
	SS188	95.2	131.6	54.6	22	10.5

K2 附件
K2 Attachment



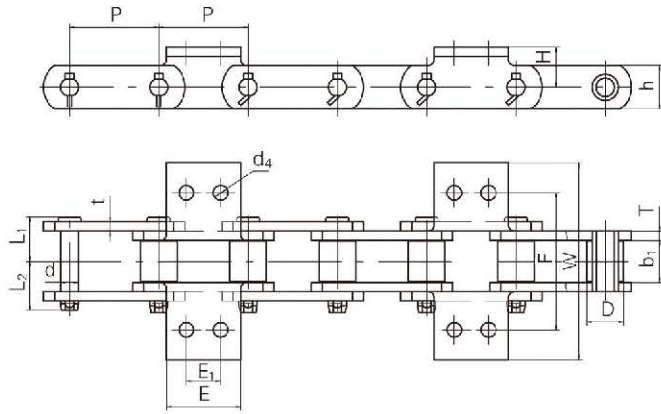
附件号	链号	F	W	H	E	E ₁	d ₄
Att. No.	Chain No.	mm	mm	mm	mm	mm	mm
K2	SS188	106.4	131.6	20.6	54.6	31.8	8
	SS131	104.6	157.0	25.4	73.9	38.1	13.1
	SS102B	134.9	162.8	25.4	66.5	44.45	10.4
	S111	158.8	210.8	38.1	92.7	58.7	13.0
	SS110	134.8	170	25.4	75	44.45	10.4
	6188MS	106.4	129.4	23	54	31.75	10.3

K3 附件
K3 Attachment



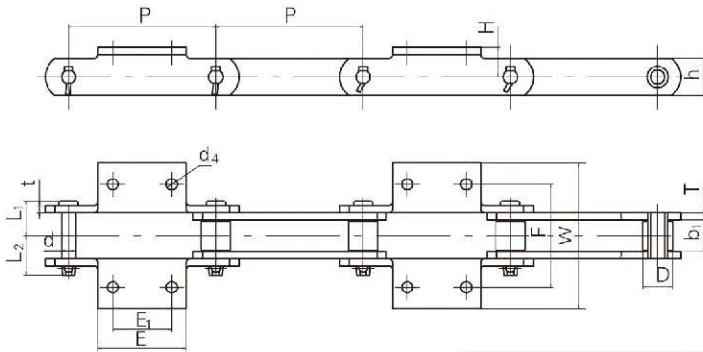
附件号	链号	F ₁	F ₂	W	H	E ₁	E	d ₄	d ₅
Att. No.	Chain No.	mm	mm	mm	mm	mm	mm	mm	mm
K3	SS188	97	108.2	131.6	20.6	31.8	54.6	10.4	8.8
	C6102S	120.6	134.9	169	25.4	44.45	66.5	10.4	10.4

斗式提升机链 Bucket Elevator Chain



F	W	E ₁	E	d ₄	H
mm	mm	mm	mm	mm	mm
120	173	30	65	13	35

链号	节距	内节内宽	滚子外径	销轴			链板		最小抗拉强度
Chain No.	Pitch	Width between inner sidebars	Roller diameter	Pin			Sidebar		Ultimate tensile strength
	P	b ₁ (min)	D(max)	d	L ₁	L ₂	h	t/T	Fu(min)
	mm	mm	mm	mm	mm	mm	mm	mm	kN
9307S-K2	78.1	36	31.75	14.27	38.9	43.5	38.1	8	100

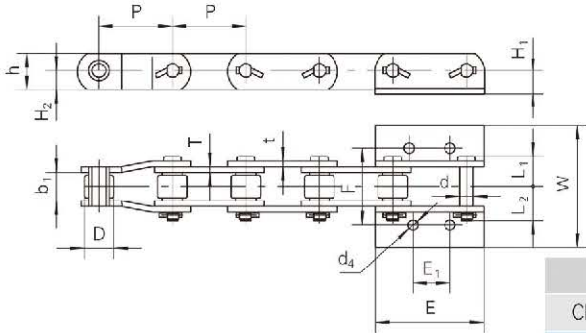


链号	F	W	E ₁	E	d ₄	H
Chain No.	mm	mm	mm	mm	mm	mm
20200S-K2	140	198	80	120	15	40
26200S-K2	160	213	80	120	15	55

链号	节距	内节内宽	滚子外径	销轴			链板		最小抗拉强度
Chain No.	Pitch	Width between inner sidebar	Roller diameter	Pin			Sidebar		Ultimate tensile strength
	P	b ₁ (min)	D(max)	d	L ₁	L ₂	h	t/T	Fu(min)
	mm	mm	mm	mm	mm	mm	mm	mm	kN
20200S-K2	200	43.8	40.1	19.05	47.8	54.8	50.8	9.5	300
26200S-K2	200	57	44.5	22.23	54.4	61.4	63.5	9.5	450

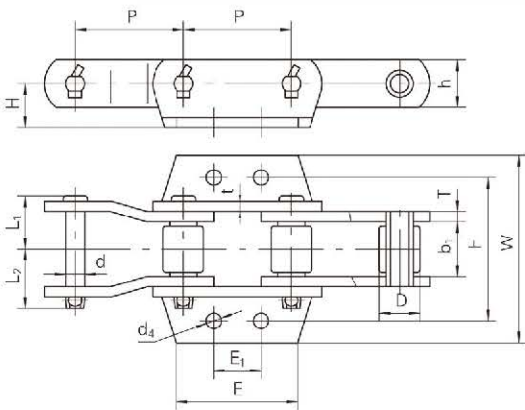


斗式提升机链 Bucket Elevator Chain



链号	F	W	d ₂	E ₁	E	H ₁	H ₂
Chain No.	mm	mm	mm	mm	mm	mm	mm
FCM-11337	104.8	136.5	13.5	38.1	115.9	28.6	20.65
P78.1-K2	104.8	145.24	14.27	38.1	115.9	28.6	22.25
RC16089	108	171.5	14.3	57.15	152.4	33.34	26.99
23310-61	108	146	14.3	57.15	163.5	33.34	23.8
23312-73	136.5	175.4	17.5	73	163.5	38.1	28.6

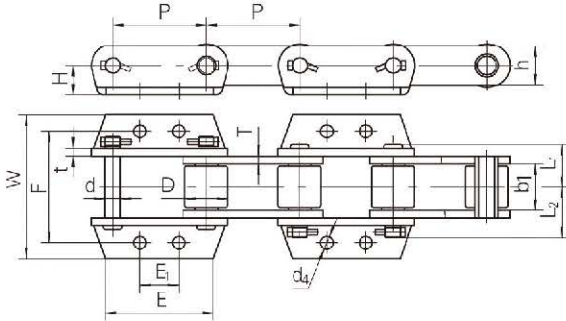
链号	节距	内节内宽	滚子外径	销轴			链板		最小抗拉强度
Chain No.	Pitch	Width between inner sidebars	Roller diameter	Pin			Sidebar		Ultimate tensile strength
	P	b ₁ (min)	D(max)	d	L ₁	L ₂	h	t/T	Fu(min)
	mm	mm	mm	mm	mm	mm	mm	mm	kN
FCM11337	78.1	37.9	31.75	15.76	41.9	46.2	41.3	8	213.6
P78.1-K2	78.1	38.1	34.93	15.88	41.9	47	44.5	8	275.6
RC16089	103.2	37.9	41.43	19.05	42.2	47.8	50.8	8	205
23310-61	103.2	38.6	41.28	19.05	42.5	47.8	47.6	8	240
23312-73	103.2	40.98	44.45	22.23	47.5	54.2	57.2	9.5	382.3



F	W	d ₄	E ₁	E	H
mm	mm	mm	mm	mm	mm
134.9	176.3	14.2	44.45	114.3	41.4

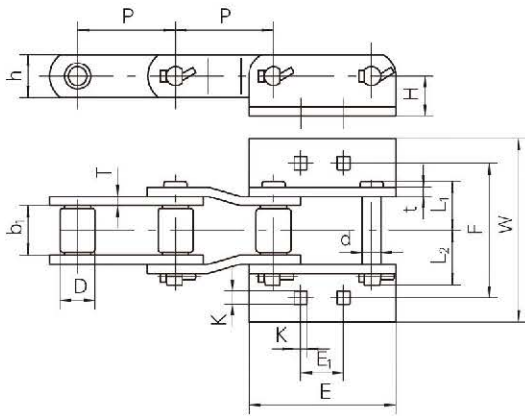
链号	节距	内节内宽	滚子外径	销轴			链板		最小抗拉强度
Chain No.	Pitch	Width between inner sidebars	Roller diameter	Pin			Sidebar		Ultimate tensile strength
	P	b ₁ (min)	D(max)	d	L ₁	L ₂	h	t/T	Fu(min)
	mm	mm	mm	mm	mm	mm	mm	mm	kN
RC15491	101.6	50.4	38.1	19.05	50.9	57.1	44.5	9.5	290

斗式提升机链 Bucket Elevator Chain



链号	F	W	E ₁	E	d ₄	H
Chain No.	mm	mm	mm	mm	mm	mm
B9856-K44	184.15	237.2	63.5	175.5	20.63	47.63
RC15128	184.2	244.5	63.5	178.5	20.6	47.65

链号 Chain No.	节距 Pitch	内节内宽 Width between inner sidebar	滚子外径 Roller diameter	销轴 Pin			链板 Sidebar		最小抗拉强度 Ultimate tensile strength
	P	b ₁ (min)	D(max)	d	L ₁	L ₂	h	t/T	Fu(min)
	mm	mm	mm	mm	mm	mm	mm	mm	kN
B9856-K44	152.4	74.93	69.85	25.3	72.2	82.7	63.5	12.7	500
RC15128	152.4	76.2	69.85	25.4	71.3	77.7	63.5	12.7	622.3

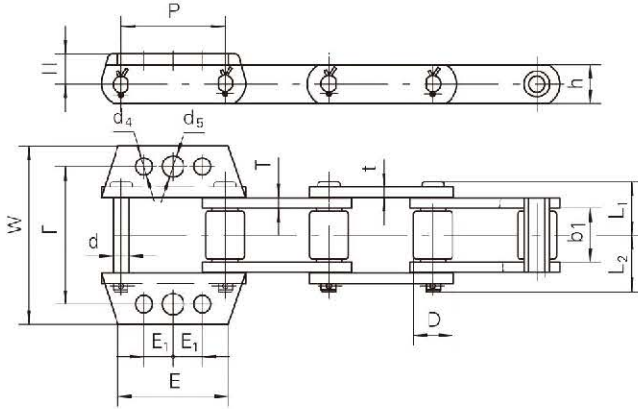


链号	F	W	K	E ₁	E	H
Chain No.	mm	mm	mm	mm	mm	mm
RC15619	139.7	190.5	13.5	44.45	152.4	41.3
C3952-K2	139.7	177.8	13.5	44.45	152.4	41.3

链号 Chain No.	节距 Pitch	内节内宽 Width between inner sidebars	滚子外径 Roller diameter	销轴 Pin			链板 Sidebar		最小抗拉强度 Ultimate tensile strength
	P	b ₁ (min)	D(max)	d	L ₁	L ₂	h	t/T	Fu(min)
	mm	mm	mm	mm	mm	mm	mm	mm	kN
RC15619	101.6	50.4	36.53	19.05	50.9	57.1	44.5	9.5	280
C3952-K2	101.6	50.4	36.53	19.05	50.9	59.1	44.5	9.5	280

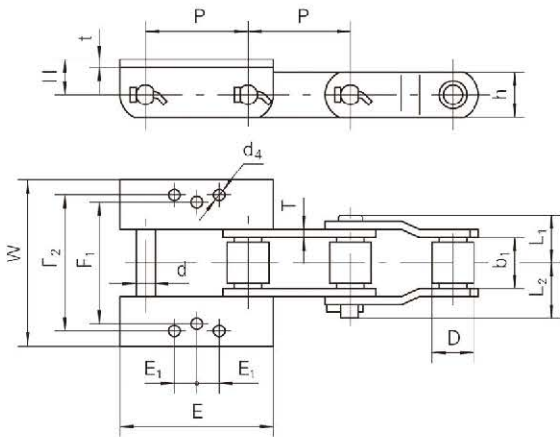


斗式提升机链 Bucket Elevator Chain



F	W	E ₁	E	d ₄	d ₅	H
mm	mm	mm	mm	mm	mm	mm
134.9	174.6	28.6	108	16.66	20.63	28.6

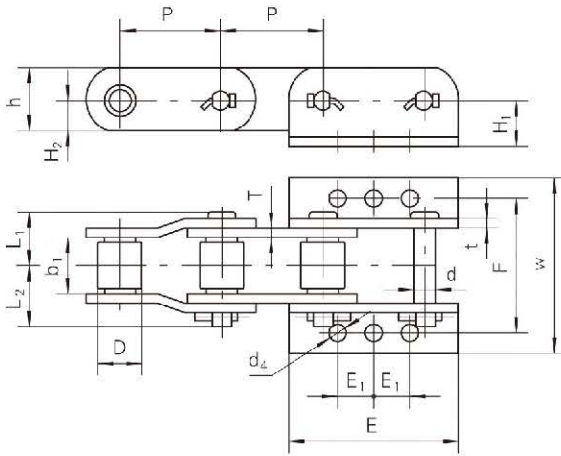
链号	节距	内节内宽	滚子外径	销轴			链板		最小抗拉强度
Chain No.	Pitch	Width between inner sidebars	Roller diameter	Pin			Sidebar		Ultimate tensile strength
	P	b ₁ (min)	D(max)	d	L ₁	L ₂	h	t/T	Fu(min)
	mm	mm	mm	mm	mm	mm	mm	mm	kN
3433-K33	101.6	52.83	38.1	15.74	52.3	56.7	38.1	9.5	190



链号	F ₁	F ₂	W	E	E ₁	d ₄	H
Chain No.	mm	mm	mm	mm	mm	mm	mm
RC15127	119.1	134.9	165.1	152.4	22.25	11.9	38.1
4116SP	120.65	134.92	177.8	155.6	22.25	11.1	41.3

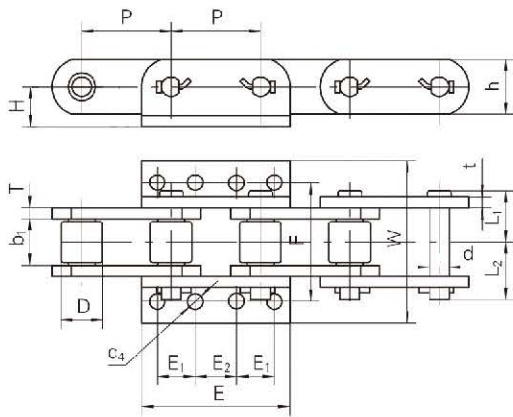
链号	节距	内节内宽	滚子外径	销轴			链板		最小抗拉强度
Chain No.	Pitch	Width between inner sidebars	Roller diameter	Pin			Sidebar		Ultimate tensile strength
	P	b ₁ (min)	D(max)	d	L ₁	L ₂	h	t/T	Fu(min)
	mm	mm	mm	mm	mm	mm	mm	mm	kN
RC15127	101.6	50.8	41.25	19.05	46.1	54.9	44.5	8	266.8
4116SP	104.55	50.4	41.28	19.05	50.9	59.1	44.5	9.5	267

斗式提升机链 Bucket Elevator Chain



链号	F	W	d _z	E ₁	E	H	H ₂
Chain No.	mm	mm	mm	mm	mm	mm	mm
FCM-11336	134.9	180.3	17.5	36.5	170.6	47.6	31.75
RC16090	136.5	178.1	17.5	36.5	171.5	46.04	30.16

链号 Chain No.	节距	内节内宽	滚子外径	销轴			链板		最小抗拉强度
	Pitch	Width between inner sidebars	Roller diameter	Pin			Sidebar		Ultimate tensile strength
	P	b ₁ (min)	D(max)	d	L ₁	L ₂	h	t/T	Fu(min)
	mm	mm	mm	mm	mm	mm	mm	mm	kN
FCM-11336	102.6	55.3	44.5	22.23	54.5	61.6	63.5	9.5	443.4
RC16090	103.2	55.6	44.45	22.23	54.6	62.1	63.5	9.5	400



H	F	W	E	E ₁	E ₂	d _z
mm	mm	mm	mm	mm	mm	mm
46	136.7	187.5	178	43.7	47.8	17.5

链号 Chain No.	节距	内节内宽	滚子外径	销轴			链板		最小抗拉强度
	Pitch	Width between inner sidebars	Roller diameter	Pin			Sidebar		Ultimate tensile strength
	P	b ₁ (min)	D(max)	d	L ₁	L ₂	h	t/T	Fu(min)
	mm	mm	mm	mm	mm	mm	mm	mm	kN
MSR7633-K4	103.2	52.3	47.63	22.23	58.8	66.2	63.5	12.7	444.54