

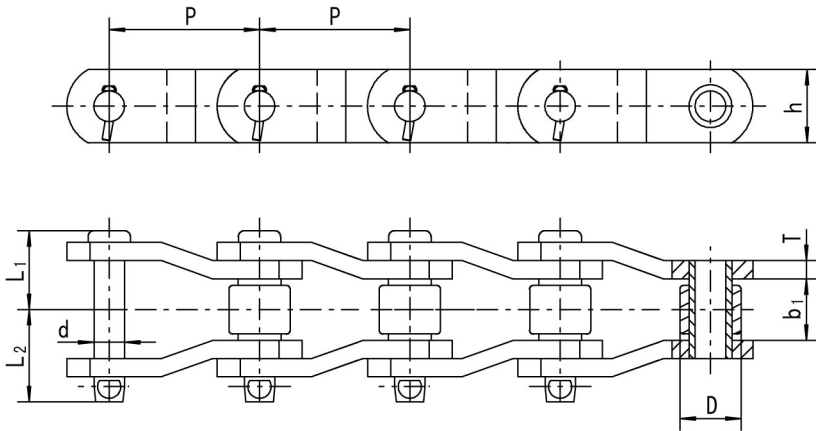


黄山链条

安徽黄山恒久链传动有限公司
ANHUI HUANGSHAN HENGJIU CHAIN TRANSMISSION CO., LTD

重载传动用弯板链

Heavy-Duty Cranked-Link Transmission Chains



Properties
 TH Thru-Hardened
 CARB Carburized
 SIH Selectively Induction Hardened

链号		节距 Pitch	窄端内宽 Inside width at narrow end $b_1(\text{min})$ mm	销轴 Pin				链板 Sidebar		滚子 Roller		最小抗拉 强度 Ultimate tensile strength Q_{min} kN	许用工作 载荷 Rated working load kN	每米净重 Weight per meter q kg/m
HS Chain No.	ISO Chain No.			p mm	d mm	L_1 mm	L_2 mm	Properties	h mm	T mm	D max mm			
HS 2570	2010	63.5	37.9	15.88	41.9	46.2	TH	44.5	8	31.75	CARB	254	16.5	13.1
HS 3067	2512	77.9	39	19.05	46.1	53.5	TH	50.8	9.5	41.4	TH	300	26.8	18.1
HS 2512A		77.9	39	20.32	47	56	TH	54	9.5	41.4	TH	300	19.8	18.7
HS 1568		77.9	38.61	19.05	46.1	52.5	SIH	57.15	9.5	41.27	TH	360	25.2	20.2
HS 1037		78.1	36.83	16.51	44.9	49.3	SIH	44.45	9.5	31.75	TH	270	18.3	13.9
HS I3P		78.1	37.5	16.5	45.5	50.9	TH	39.6	9.5	31.75	TH	330	22.7	12.4
HS 1190		78.1	37.5	16.5	45.5	50.9	TH	44.45	9.5	31.75	TH	330	22.7	13.3
HS2814	2814	88.9	38.1	22.23	53.6	62	TH	60.5	12.7	44.45	TH	516	37.6	25.3
HS 6214		101.6	68.66	31.55	68	76.9	SIH	69.85	12.7	57.15	TH	480	36	37.6
HS 1240		103.2	48	22.1	58.1	65.9	SIH	50.8	12.7	44.45	TH	209	13.6	21.4
HS 1244		103.2	48	22.1	58.1	67.5	SIH	54	12.7	44.45	TH	400	28	22.4
HS I4P		103.2	50.8	22.23	60.2	67.5	TH	57.2	12.7	44.45	TH	666.8	41	23.8
HS3315	3315	103.45	47.63	23.8	62.9	71.4	TH	60.3	14.3	45.23	TH	560	40.3	27.8
HS 1245	SIH						TH				560	40.3	28.4	
HS 4073		103.45	48.8	25.4	62.8	70.3	TH	60.3	14.3	45.21	TH	755.7	52	27.8
HS 4522	3618	114.3	52.3	27.94	63.8	72.2	TH	79.2	14.3	57.15	TH	760	53	38.1
HS 635		114.3	50.8	27.94	62.6	71.7	SIH	76.2	14.3	57.15	TH	740	50.3	37.4
HS4523		118.11	52.3	27.94	67.2	75.6	TH	82.6	16	57.15	TH	850	63.7	41.9
HS5027	4020	127	69.4	31.75	78.5	84.5	TH	88.9	15.9	63.5	TH	1156	75.1	51.3
HS 1306	4824	152.4	74.6	37.9	85.2	97	SIH	101.6	19.05	76.2	TH	1400	95.2	69.1
HS1030		78.1	36.83	15.75	41.4	46.8	CARB	38.1	8	32	TH	109	8	10.4
HS1207		127	68.25	31.55	74.1	78.1	SIH	88.9	15.9	63.5	TH	990	73	51.18
HS238		88.7	36.83	22.1	52.65	54.65	SIH	57.2	12.7	44.45	TH	400	27.6	22.88